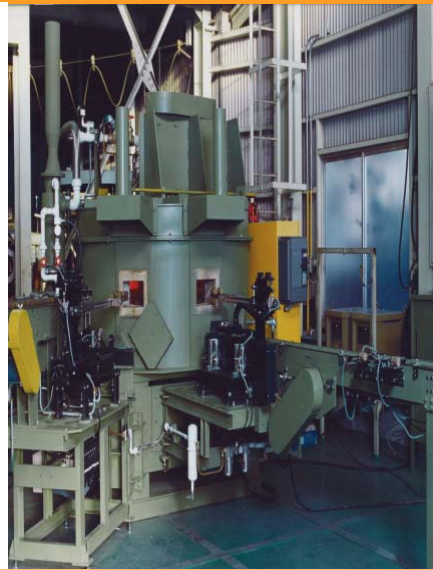


Aluminum alloy and copper alloy forge heat furnace [Circulating hot air, rotary hearth furnace]

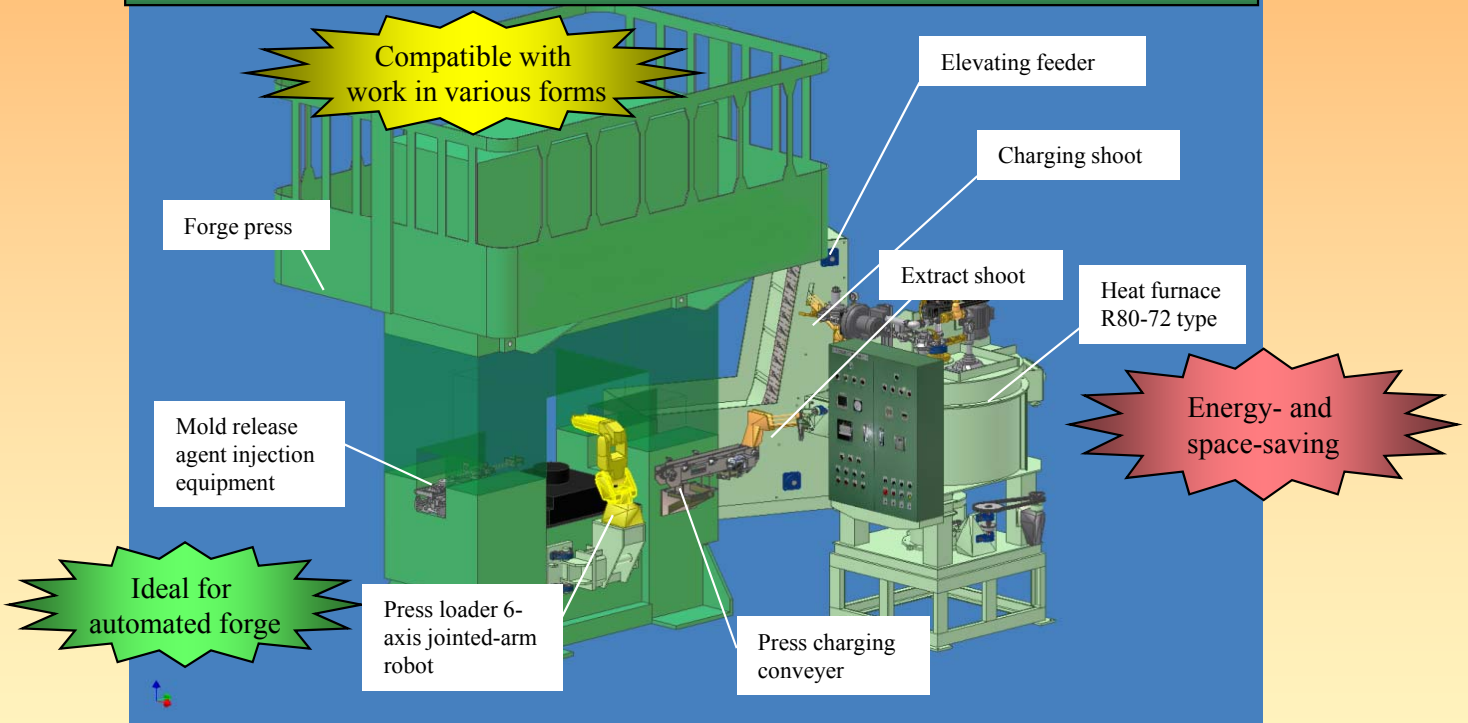


■ Specification
 Material: Aluminum or copper alloy
 Process material: discoid shape
 External diameter: $\phi 20 \sim 120\text{mm}$
 Thickness: $4 \sim 20\text{mm}$
 Cycle time: 5 sec / cycle
 Heat source: L.P.G. or L.N.G.
 BURNER capacity: 70 kW
 (60,000kcal/h)
 TYPE: R77.6-60 type



■ Specification
 Material: Aluminum or copper alloy
 Process material: round bar shape
 External diameter: $\phi 15 \sim 50\text{mm}$
 Length: $20 \sim 200\text{mm}$
 Cycle time: 8 sec per cycle
 Heat source : L.P.G. or L.N.G.
 BURNER capacity: 116kW (100,000kcal/h)
 TYPE: R135-90-1 type

Reference example of automated line



Features

- 1) Circulating hot air technology --- rapid heating and highly-accurate temperature distribution!
- 2) Ace for FA --- stable transfer and direct connection with pre- and post-transfer lines made easy!
- 3) Saving energy --- compared to the previous conveyer continuous furnace, reduced by approximately 1/4!
- 4) Saving space --- compared to the previous conveyer and pressure furnaces, reduced by approximately 1/5!



ファーネス重工株式会社
FURNACE JUKO CO.,LTD.

<http://www.furnace-juko.co.jp>